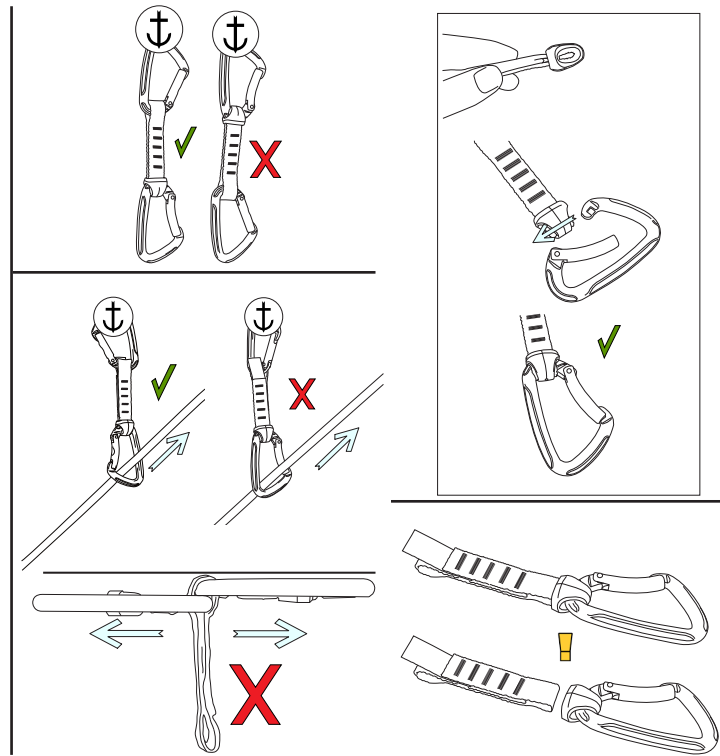
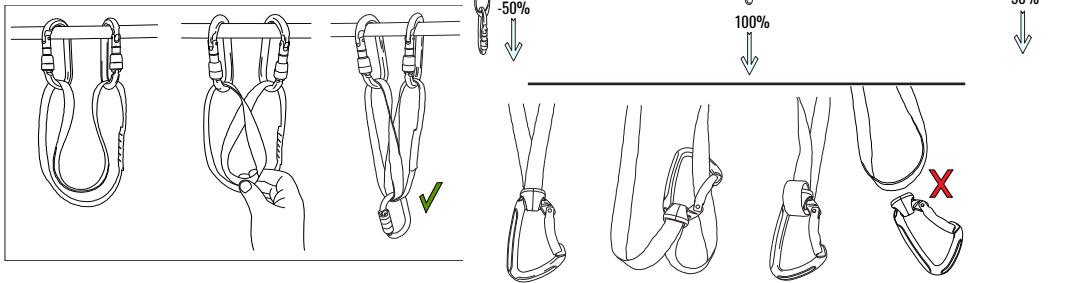
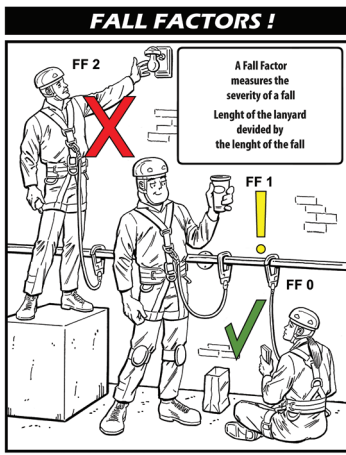




**G80
TubWeb Sling
-
MBS 22 kN**



EYOLF Inc.
191 Gregson Ct
Fergus ON
N1M 2W8 Canada
Tel: +1 519 787 1581
Email: info@eyolf.ca
Web: www.eyolf.ca

Document: Sling manual rev7

Maintenance

Storage

Important info

Inspection & repairs

Questions

FREQUENCY OF USE / APPROXIMATE LIFESPAN

Usage never - Keep for a maximum of 10 years
Rarely, once a year - up to 8 years
Occasionally, once a month - up to 7 years
Regularly, several times a month - up to 5 years
Frequently, each week - up to 3 year
Constantly, daily - up to 1 year

EN
Personal protective equipment against falls from a height. General requirements for instructions for use, maintenance, periodic examination, repair, marking and packaging as per EN 365:2004

Thank you for using an Eyolf product. We have done everything possible to ensure that the information provided in this manual is accurate at the time of publication. However, we do not guarantee that this information will remain up to date, as many products and techniques change over time.

Mountaineering, climbing, caving, working at height and other related activities are inherent dangerous due to outside factors and hidden risks. **Not** understanding, taking precautions and eliminating these risks can lead to serious injuries and death.

If in doubt do not use the product!

Contact us if you have any questions or concerns.

Warning
Medical condition - It should be understood that working at height and the use of equipment to do so, involves a certain amount of physical and mental exertion. Certain medical conditions are a definite contra-indication to the safe use of the equipment and working at height.
Training - Training and assessment of competency are essential before using this product. Users must be aware of the limitations, precautions and the dangers of misuse.
Risk assessment - rescue plan A risk evaluation and a quick response rescue plan should be in place prior to any activities at height. For instance, if the risk assessment carried out before the start of work shows that loading in the case of use over an edge is possible, appropriate precautions should be taken. A risk assessment is also necessary to deal with any emergencies that could arise during the work/exercise. Relying upon a local emergency rescue team is not a rescue plan.

and could get you in severe trouble as they might not be capable or take too long to perform a rescue. Have a suitable rescue plan in place!
Repairs - Do not make any alterations or additions to the product without the manufacturer's prior written consent. Repairs shall only be carried out in accordance with manufacturer's procedures. Without consent, any repair or alterations should be done by the manufacturer.
Intended use - The product has been tested for specific use. Do not use the product other than indicated without the consent of the manufacturer.
PPE - PPE stands for Personal Protective Equipment. Regarding this product, this means it should be provided to an individual user.
Strengths - Strengths quoted are when the product is tested as new and are in accordance with the manufacturer's test methods or to the appropriate standard. Any weights and measurements are approximate.

Compatibility - Make sure that each item in an assembly can be used together and work as a system. Compatibility needs to be checked prior to use. Check individual manuals for each item and see if they can be used together.

Safe use - When working at height or other related activities such as rope access, never rely on a single piece of equipment. Always make sure you have an equal, redundant backup system.

- Multiple Loading

Do not subject the hook to multiple forces. This could cause hook body deflection resulting in gate failure.

- Adding a connector to the stitched loop.
- Do not clip in an extra connector, as the stitching won't hold!
- Sharp edges should be avoided at all times. If it cannot be avoided, proper precautions should be taken.
- Do not fall into the slings directly without any energy absorbance. Minimize a fall at all times; check your fall factors and the equipment you're using to see

if it can survive the impact. See drawing on fall factors.

Use in extreme environment - Use of any PPE in extreme environments can be dangerous. It is important to do appropriate testing before using our products in environments such as extreme cold or high temperatures (working temperatures are -30 degrees up to 60 degree Celsius). Chemicals, dust, sand, other foreign materials, electrical power, grinding and chafing should be avoided. If you have any questions contact us and we can help you determine the effects.

Inspection - An examination should be carried out before the product is put into service. Periodic examinations should take place at least once a year, taking into account factors such as legislation, equipment type, the frequency of use, and environmental conditions. A periodic exam should be carried out by a competent person. For complex items such as self-retractable lifelines please contact us for further details. Before each

use, visually inspect to ensure the product is in serviceable condition and operates correctly. If any compromises are found, do not use the product and retire it. If the product has been used to arrest a fall, withdraw from use immediately! Do not use again until a competent person states in writing that it is acceptable for use. A pre-use check by the user may not be applicable if the user is under the supervision of a competent person or in the case of emergency use where the product has been pre-packed or sealed by a competent person. When carrying out an inspection pay attention to the following items: **Check** the label/ marking (visible, legible, age) **Check** webbing (cuts, burns, wear, chemical marks, crushed, other damage) **Check** stitching (cut, worn, coloured or disordered threads) **Check** attachment points (deformation, cracks, wear, corrosion, marks) **Check** O-ring and connectors (deformation, cracks, wear,

corrosion, marks) **Check** compatibility of any connectors **Check** condition of protective components.

Maintenance - Always keep the product clean and dry. Any excess moisture should be removed with a clean, dry cloth and then allowed to dry naturally in a warm room away from direct heat. Rinse in clean cold water. If still soiled wash in clean warm water (max. 40°C) with a soft detergent (within a pH range of 5.5 to 8.5). Rinse properly in clean cold water and, if needed to disinfect, use a solution of water with alcohol. Do not use bleach! Follow these instructions and if in doubt about the disinfecting method please contact us for further details.

Lubrication - When lubrication is needed a silicon or Teflon based spray can be used. Do not excessively spray the lubricant over the buckle or gate. Wipe off any excess and protect any webbing or rope from being sprayed.

Storage - Transportation - After cleaning, store unpacked in a cool, dry, dark place away from

direct sunlight, excessive heat sources, sharp edges, vibration or other possible causes of damage. Do not store when wet or in a damp area >70% Humidity. If a long shelf life is required it is advisable to store in a moisture-proof package, like a polyethylene bag.

Lifespan - This is difficult to estimate but we advise not to use more than ten years after the date of manufacture. Assuming you have used the correct storage. The working life can vary from a ten-year span to a single use in extreme circumstances (e.g. highly chemical environment, serious fall, etc.). UV light including sunlight will reduce the working life.

Anchoring - Any fall arrest anchorage used should be able to withstand a force of 22kN when not certified or withstand at least two times the Maximum Arrest Force when engineered. Do not create slack in the system and avoid any pendulum effect/ swing during a fall. Ideally, the user should be attached to the anchor

as vertically as possible. For work positioning, restraint, and/or rescue we advise the anchor hold at least 12kN of force for every person/device attached to it. (Load sharing is an option) When connecting to an anchor device or structure, use a suitable form of connector complying with EN 362, either with a shock absorber, complying with EN 355, a lanyard, complying with EN 354 or sling and carabiners depending on the situation you are in. Follow the standard EN 795 for anchoring.

Fall clearance - It is important to keep in mind that the flight path is clear from any obstacles when using a fall arresting system. It is essential for safety to verify the free space required beneath the user at the workplace before each occasion of use, so that, in the case of a fall, there will be no collision with the ground.

Calculating the total fall clearance - The fall clearance is the distance

required to safely arrest a fall. It is the minimum distance needed/required from the anchor to the ground.

Step 1 - calculate the Free Fall (F)

Step 2 - determine from the label how much the shock absorber deploys (D)

Step 3 - determine the stretch of the harness (H)

Step 4 - add a safety factor of 2m (S)

Step 5 - add all figures together to get the clearance (C)

C=F+D+H+S

Markings and/or symbols - On our label you will find G10-060 B in which: G = Product Class - 10 = Product number - 060 = Length of the product - B = Colour of the product (ex. B stands for Blue) DOM (Date of Manufacture) in year and month Serial # or batch # CE mark, which stands for "Conformité Européenne" ("European Conformity"). EN 566 is the European standard to which the product is certified.

Country of destination - It is essential for the safety of the user that if the product is re-sold outside the original country of destination

the reseller shall provide instruction for use, for maintenance, for periodic examination and for repair in the language of the country in which the product is to be used.

One person - The anchor device is only to be used for one person only under normal working conditions.

MAF 6kN - When the anchor device is used as part of a fall arrest system, the user shall be equipped with a means of limiting the maximum dynamic forces exerted on the user during the arrest of a fall to the maximum of 6kN.

Maximum load - The maximum load that could be transmitted in service from the anchor device to the structure and the directions of loading relevant to the type of fixing and structure are set by the type of usage and work load limit applicable to the situation of use.

Maximum deflection - See drawing for the maximum deflection of the anchor device and displacement of the anchor point that can occur in service. (Rigging Angles)

PPE - The slings are only to be used as PPE (Personal Protective Equipment) as part of a fall protection system and cannot be used as a lifting sling.

Wet and icy conditions - When this product is wet or icy the breaking strength is influenced.


Knots - When tying a knot into the sling the breaking strength is reduced depending on the type of knot.

Supervision - Under certain circumstances where a person is temporarily using a PPE against falling a competent and/or trained person could supervise the user.

Read the manual and keep it - Keep the user instructions/information accessible as a permanent record on- and off-site. Keep a copy of the manual with the product at all times.

Warranty - Equipment offered by Eyolf Inc. are warranted against factory defects in workmanship and materials for a period of three years from date of installation or use by the owner, provided that this period shall not

exceed three years from the date of manufacturing (see label on product). Upon notice in writing, Eyolf Inc. will promptly repair or replace all defective items. Eyolf Inc. reserves the right to elect to have any defective item returned to its plant for inspection before making a repair or replacement. This warranty does not cover equipment damages resulting from abuse, damage in transit, or other damage beyond the control of Eyolf Inc. This warranty applies only to the original purchaser and is only one of applicable to Eyolf products, and is lieu of all other warranties, expressed or implied.

 INSPECTION RECORD Owner: _____ Address: _____	YEAR 1	INSPECTION RECORD DATE: _____ RESULT: _____ DATE NEXT INSPECTION: _____ INSPECTOR SIGNATURE: _____	YEAR 2	INSPECTION RECORD DATE: _____ RESULT: _____ DATE NEXT INSPECTION: _____ INSPECTOR SIGNATURE: _____	YEAR 3	INSPECTION RECORD DATE: _____ RESULT: _____ DATE NEXT INSPECTION: _____ INSPECTOR SIGNATURE: _____	Product: _____ Model: _____ Serial #: _____ DoM: _____ Date of Purchase: _____ First Use: _____ Eyolf Inc. PO Box 418 Fergus ON N1M 3E2 Canada Tel: +1 519 327 1981 Email: info@eyolf.ca
	YEAR 4	INSPECTION RECORD DATE: _____ RESULT: _____ DATE NEXT INSPECTION: _____ INSPECTOR SIGNATURE: _____	YEAR 5	INSPECTION RECORD DATE: _____ RESULT: _____ DATE NEXT INSPECTION: _____ INSPECTOR SIGNATURE: _____	YEAR 6	INSPECTION RECORD DATE: _____ RESULT: _____ DATE NEXT INSPECTION: _____ INSPECTOR SIGNATURE: _____	
	YEAR 7	INSPECTION RECORD DATE: _____ RESULT: _____ DATE NEXT INSPECTION: _____ INSPECTOR SIGNATURE: _____	YEAR 8	INSPECTION RECORD DATE: _____ RESULT: _____ DATE NEXT INSPECTION: _____ INSPECTOR SIGNATURE: _____	Reason for entry inspection or repair Defects noted - repairs carried out and other information:		
	YEAR 9	INSPECTION RECORD DATE: _____ RESULT: _____ DATE NEXT INSPECTION: _____ INSPECTOR SIGNATURE: _____	YEAR 10	INSPECTION RECORD DATE: _____ RESULT: _____ DATE NEXT INSPECTION: _____ INSPECTOR SIGNATURE: _____			